

Miller Quick Check 3

Miller Instruments Ltd.

transformer tester



Transformer

Quick

Check

Attach the leads

Select the test

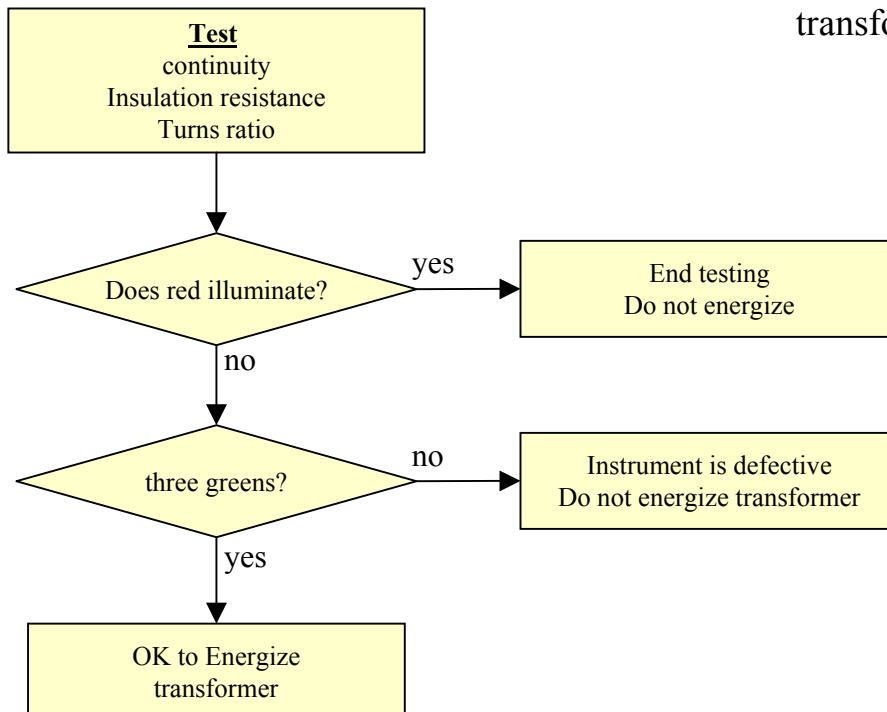
Push the button

The three tests are:

continuity

insulation resistance

transformer turns ratio



Quick Check 3 transformer tester

Miller Instruments Ltd.
preliminary specification
April 20, 2000.

| | | |
|------------------------------|---|--------------------|
| insulation test | } | “PASS” – green LED |
| transformer turns ratio test | | “FAIL” – red LED |
| continuity test | | |

Insulation Test

| | |
|------------------|-------------------------------------------------------------------------------------------|
| Test voltage: | 1000VDC |
| Indicators: | “PASS” for over $100M\Omega \pm 5\%$ “FAIL” for under $90M\Omega \pm 5\%$ |
| Test selections: | Between H-leads and Chassis Between X-leads and Chassis Between H-leads and X-leads |

Transformer Turns Ratio Test (TTR)

| | |
|------------------|-----------------------------------------------------------------------------------------------------------------------------|
| Test selections: | Primary: 19.9, 14.4, 7.2 and 2.4kV Secondary: 600, 480, 347, 240 and 120V |
| Test voltage: | 40VAC (60Hz) to the primary coil |
| Indicators: | “PASS” when ratio is within $\pm 1\%$ of the nominal ratio “FAIL” when ratio is greater than $\pm 1\%$ the nominal ratio |

Continuity Test

| | |
|-----------------|--------------------------------------------------------------------------------------------------------|
| Indicators: | “PASS” for less than $500\Omega \pm 5\%$ + audible buzzer. “FAIL” for more than $750\Omega \pm 5\%$ |
| Test terminals: | Between H_1-H_2 X_1-X_2 |

General

| | |
|-------------------------|--------------------------------------------------------------------------------------------------------------------|
| Test leads: (5 feet) | H_1 and H_2 -leads for primary winding X_1 and X_2 -leads for secondary winding GND lead for chassis |
| Power: | Rechargeable batteries (12VDC x 2pcs) (rechargeable with 120VAC) |
| Case: | 13”(W) x 16”(L) x 7”(H) |
| Weight: | 7.0 kg |